



QUICK·STEP®

FLOOR DESIGNERS



2023 - 2024

PARQUET

Invite nature
inside

Wood for
your life

Dark luxe and
other top trends



PAL4830TU

YOUR LIFESTYLE, YOUR FLOOR

Carefree living starts in a home with exceptional floors that can withstand what life throws at them. From mud trails after walking the dog to wine stains after an epic party with friends: no matter the challenge, your parquet floors are protected for years to come, thanks to our Wood for Life technology. This innovative protective layer prevents dirt from getting into the wood, ensuring that your floor always looks new and authentic.

Add style and ease to your life

Choose from our wide range of colours and styles and enjoy the natural, authentic feel of true wood. Are you a traditionalist or a modern visionary? Whatever your taste is, we help you bring character into your home. Pick a colour and explore a vast range of floors suitable for your needs. No worries: it's all real wood with zero compromises in terms of strength, resistance and performance. It's built for you to last a lifetime.

READY TO FIND THE PERFECT MATCH?
START BROWSING!



Start exploring

WOOD FOR MY LIFE	P. 8
INVITE NATURE INSIDE	P. 28
ON TOP OF THE TRENDS	P. 52
TOOLS TO HELP YOU CHOOSE	P. 66
TIPS & TRICKS	P. 68
COLLECTIONS	P. 90
ACCESSORIES	P. 104



True craftsmanship from the heart

P. 26

Get a sneak peek at the innovative process behind the floor of your dreams.

What's trending?

P. 52

From dark luxe to soft materials. Find out which booming trend best suits your personality.



Wood for my life: strong floors that are beautiful to look at

P. 8

Say goodbye to dirt, dust and moisture settling into the edges and grains of your wooden flooring. Discover our Wood for Life technology for a carefree home experience.



PARQUET

Authentic beauty without compromises

PAL6692TU

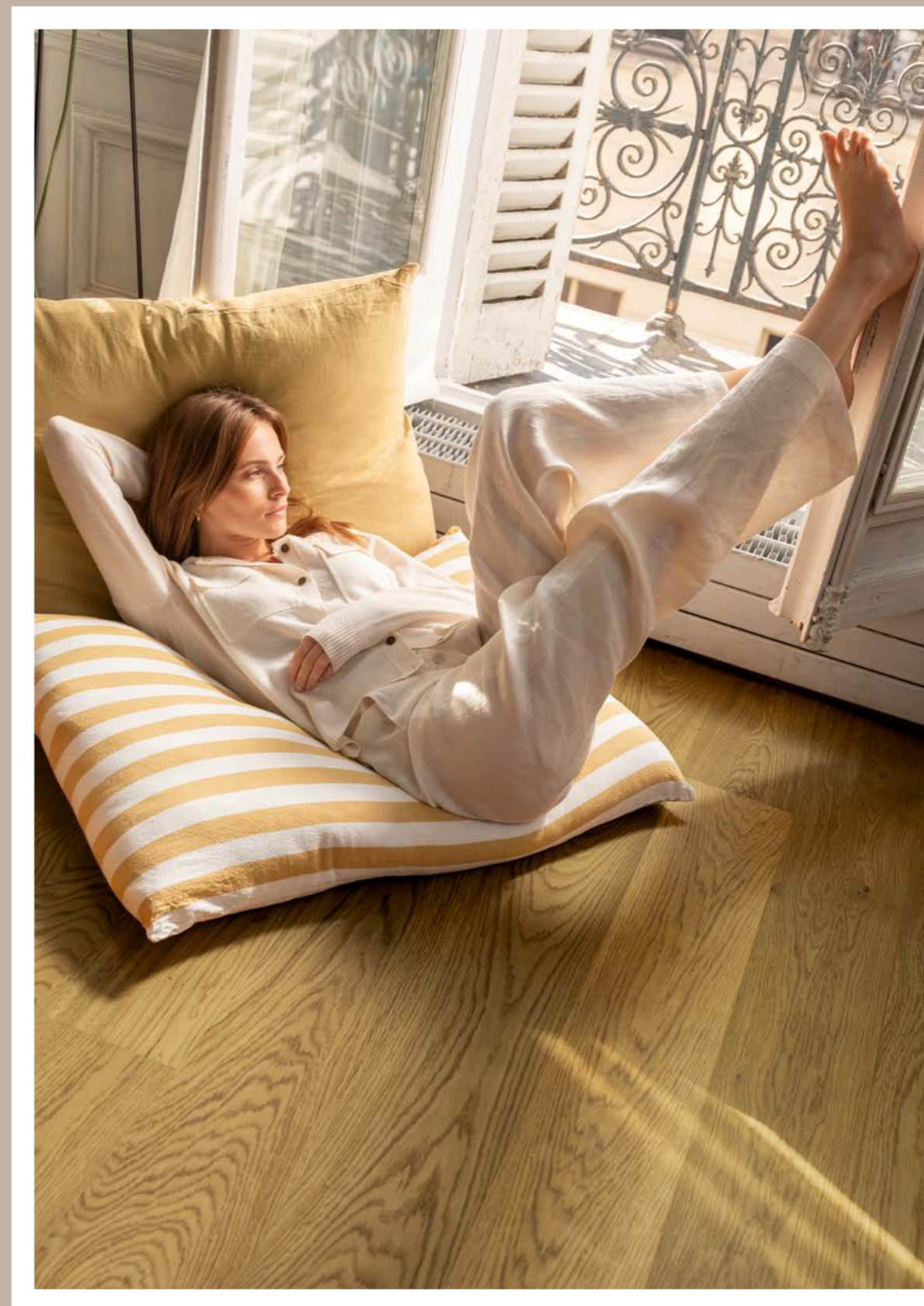
WOOD FOR *My* LIFE



FOR ALL LIFESTYLES, INCLUDING YOURS

Allergic to dirt and scratches? We feel you. To make sure you enjoy your home with as few worries as possible, we developed the Wood for Life technology. Say goodbye to dirt, dust and moisture settling into the edges and grains of your wooden flooring. Your parquet is protected in so many different ways, it will easily keep its authentic look. You don't have to worry about moisture seeping into the wood and leaving marks. Try a wood floor that's just as strong as it is beautiful to behold.

No stress. Simply enjoy your Wood for Life.





Enter without caution

It's nice to come home. Coming home is even nicer if you have to worry less about stains or scratches on your floor. Our highly wear-resistant wood is prepared to handle your day-to-day routines. Even your four-legged friends are welcome.



Always up for a long brunch

From food stains to spilled drinks: your Quick-Step floor is always prepared for action, thanks to multiple protective layers. For your convenience, maintenance is simple – and your floor always looks inviting when you're inviting.

WOOD FOR *My* LIFE





Effortless installation

Installing your Quick-Step floor is as easy as 1-2-3. Floating or glued down: the choice is yours! Easily combine it with underfloor heating, or take it to the next level and use our flooring to finish or renovate any type of staircase.

TAKE A LOOK AT OUR ACCESSORIES FOR A SWIFT INSTALLATION AND A NICE FINISHING TOUCH



Authentic beauty

Your cosy cocoon deserves the natural beauty of wooden flooring. Bring nature indoors and surround yourself with natural materials, plants and organic shapes. Select from our diverse range of colours, grades and sizes. Every Quick-Step plank is unique, giving your home that real wood authenticity. The secret behind our wooden flooring? A genuine passion for design and a product made with love, to enjoy for the rest of your life.

WOOD FOR LIFE PARQUET CAN HANDLE YOUR *lifestyle*

Quick-Step parquet with Wood for Life

Live life to the fullest. Our durable floors are made for running around with your kids, dinners with friends & playtime with your pets.

1. EASY-TO-CLEAN SURFACE

Your floors will never look dirty or dark. Thanks to a unique coating system that covers the full surface, even in the deepest surface textures, they're protected from water and are easy to clean. Dirt and liquids won't stick to the wood!

2. NO DARK JOINTS

During cleaning, water and dirt are barred from entering the wood pores, thanks to a unique hydro repellent coating system. This covers the edge to avoid water being absorbed by the wood.



/// QUICK-STEP

COMPETITOR

Competitor parquet

Standard parquet floors are more susceptible to wear and tear during your everyday routines, gatherings with friends and other activities. They won't withstand too many cleanings without dulling, either.

1. DIFFICULT-TO-CLEAN SURFACE

Without a high-quality coating system that protects even the deepest textures, your floors are less protected against water absorption and are more difficult to clean. Dirt and liquids are more likely to stick to the wood.

2. DARK JOINTS

Without a unique hydro repellent coating system, you're likely to encounter water and dirt infiltrating the wood pores. If the edges are not covered, there's a possibility of water being absorbed by the grains in the wood, creating dark joints.



PALAZZO

PAL1472TU

NO STRESS

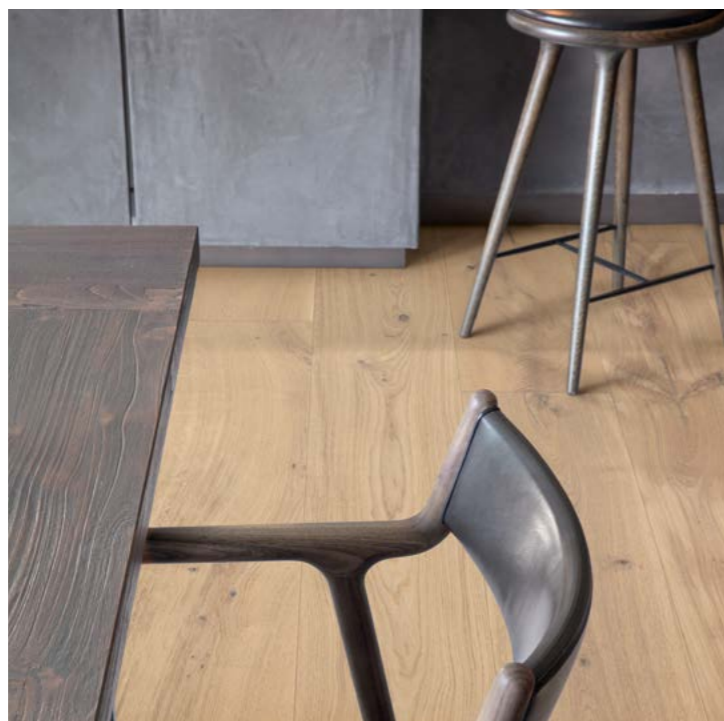


WATER-REPELLENT COATING

Your floors will never look dirty or dark. With a unique coating system that covers the full surface, even in the deepest brushings, we protect the wood from water absorption and make it easy to clean. Liquids and dirt don't get a chance to infiltrate the wood surface.



PAL5481TU



SHOPPING LIST



Everything you need to create the kitchen of your dreams.

INSTALLATION

SILENT WALK UNDERLAY

ADHESIVE TAPE

INSTALLATION SET

FINISHING

PARQUET SKIRTING

INCIZO PROFILE

ONE4ALL GLUE

MAINTENANCE

CLEANING PRODUCT 2.5 L

CLEANING KIT



RELAX – WE’VE GOT YOU COVERED

From installation to finish: it’s smooth sailing

1.

Pick the floor of your dreams

Whatever your project, we’ve got a floor that suits your needs perfectly.

2.

Effortless installation

Easily install Quick-Step parquet flooring in two ways: floating or glued down. The choice is yours! The Quick-Step Uniclic system makes sure you have no trouble installing your floors, even in small corners and underneath heating elements. And with the right underlay or glue and installation tools, your floors are placed in no time.

3.

The perfect finish

Add some style with skirting boards and profiles that match the colour of your floor. Or, finish up with paintable skirtings.

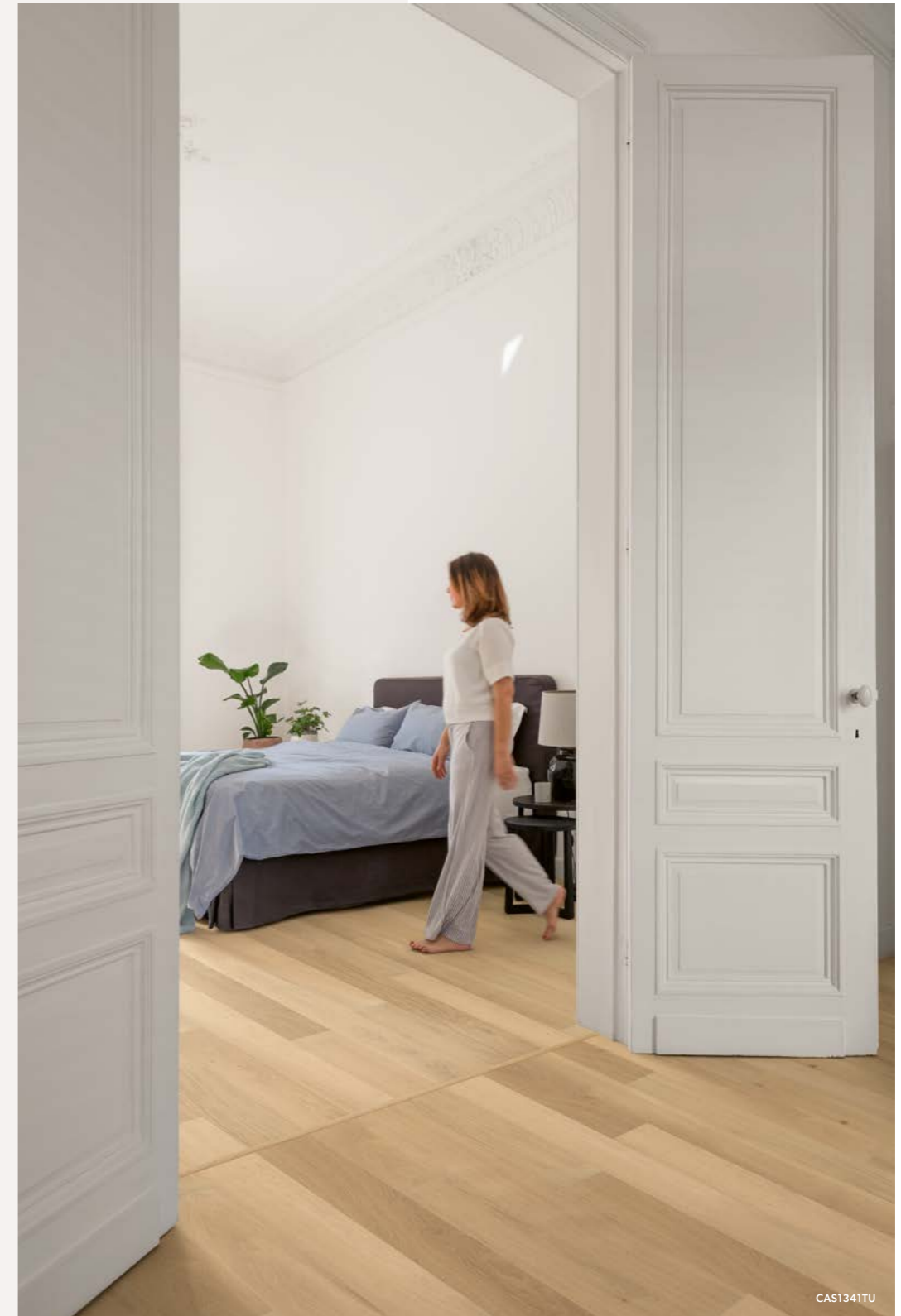
4.

Worry-free maintenance

Get the best out of your wooden floors with high-quality Quick-Step cleaning products. A deep polishing results in flawless parquet you can enjoy for years to come.



BROWSE THROUGH OUR ACCESSORIES ON P. 104



CAS1341TU



CRAFTSMANSHIP
STRAIGHT FROM
THE HEART



PAL4830TU

INVITE NATURE INSIDE



With natural materials and plants, you can add a spark of nature to your home. It's all about natural beauty. That's why all our materials are treated with the utmost respect, passion, care and attention to detail. The floors you walk on are the result of years of refinement. Every plank is unique and gives your home an authentic character. It's the type of craftsmanship you deserve – straight from the heart.

Creating your perfect floor: a labour of *love*



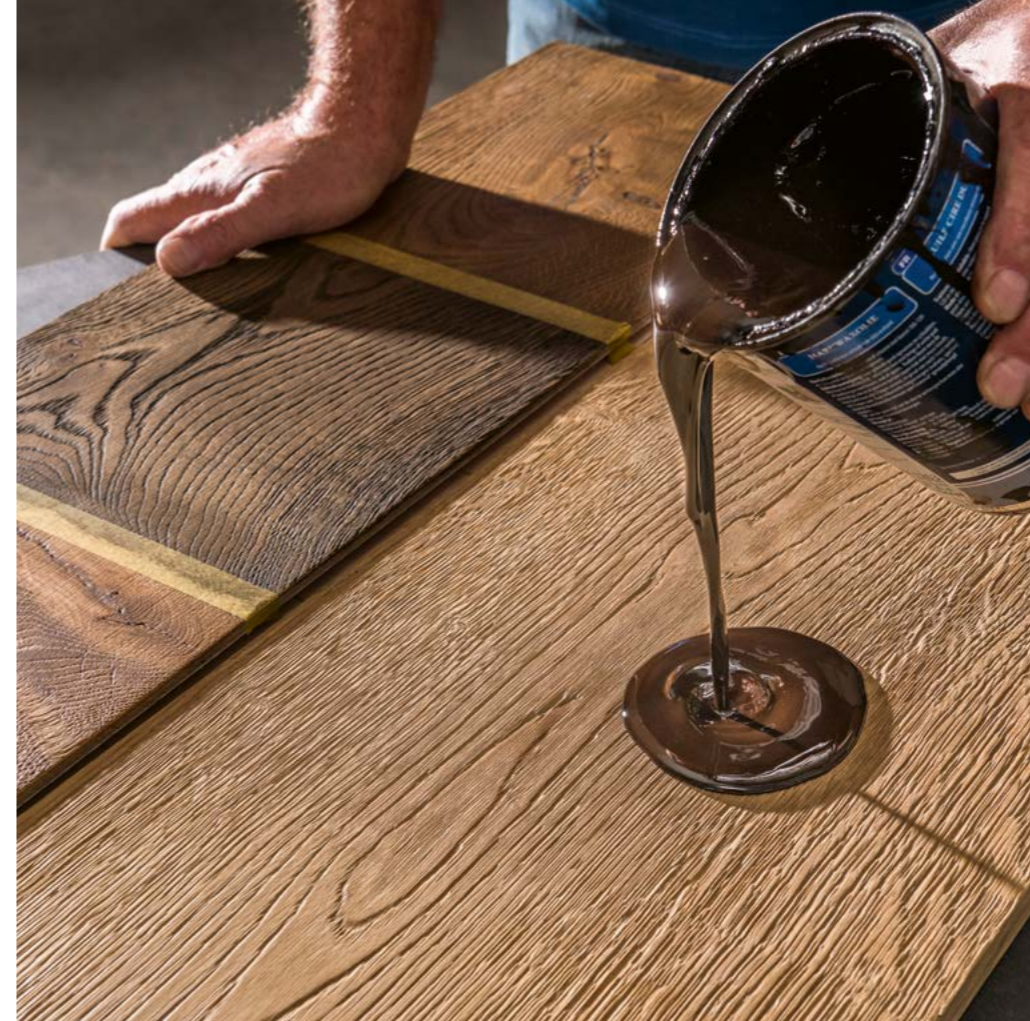
To manufacture flawless parquet for your home, we're constantly looking for the right balance between wood types, grading, colours, structures, finishes and plank sizes. These are the steps we follow meticulously.

1. GRADING YOUR FLOOR

To provide a product for everyone's specific taste, every parquet floor receives a unique grading. We make an extensive selection of the wood grain and colour, knots and cracks, and translate the tree's characteristics into a wooden floor. From a clean, calm vibe with a few knots to a more rustic look with more knots, cracks and a lively colour variation.

2. CREATING EASY-TO-USE PATTERNS

Working with patterns like herringbone shouldn't be difficult. Whether you go for a single, double or tile pattern, we guarantee it can be installed with a few clicks.



3. BRUSHING FOR AN AUTHENTIC FEEL

To create designs that really stand out in your home, we accentuate the wood grain by brushing it lightly or heavily.

4. CHOOSING THE RIGHT COLOURS

Colour is indispensable in any interior. Whether you go for trendy or traditional, we ensure you can pick between light as well as dark colours. In creating your perfect floor, our floor designers match the right colours, grades and surface effects to find the right balance.

5. GOING FOR THE PERFECT FINISH

We protect your floor with a high-quality finish and determine the final gloss level. Extra matt finishes are the most popular, but sometimes we add a little more "shine" to increase the intensity of the colour.

This unique combination is what makes your Quick-Step floors stand out from the rest. Furthermore, we make sure they're always built to last by applying numerous innovations like Wood for Life to increase durability.

It's the perfect marriage of design and performance!

IMPERIO

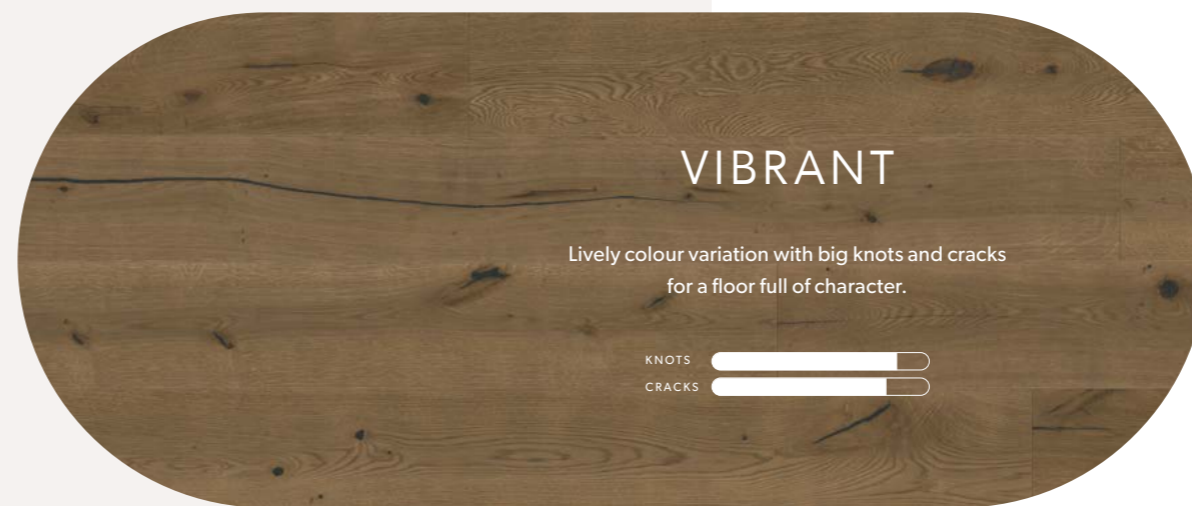
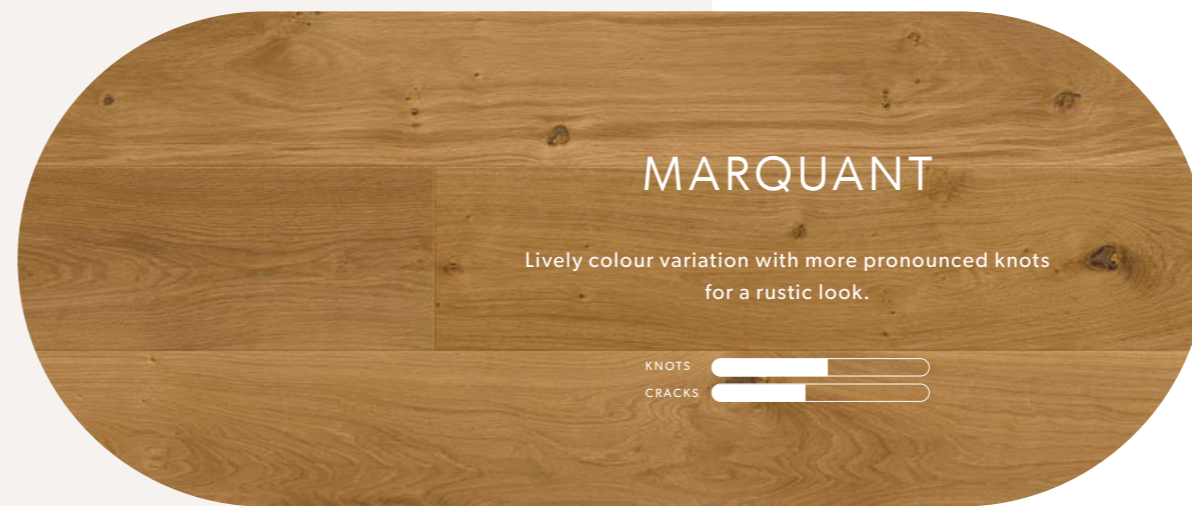
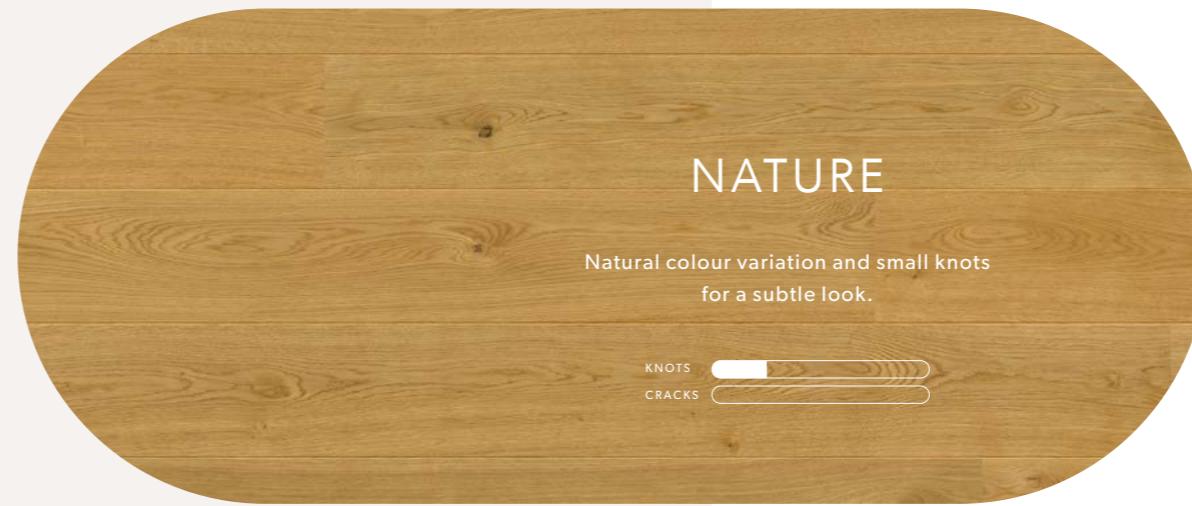
IMP1624TU



BRING NATURE INSIDE

The beauty of nature is in its diversity and detail. Invite it into your home and create that unique, authentic look. From classification to wood treatment and finishing: learn all there is to know about our lacquered and oiled floors and explore how to enjoy them for many years to come.

* Since wood is a natural product, minor colour-variation may be possible.



Grading

Our classification system divides our wide range of floors into different categories: nature, marquant and vibrant. Even though each plank is unique, this will give you an idea of what your floor will look like in the end.

Surface treatment

We add extra texture and provide you with a broad range of different styles.



(DEEP) BRUSHED

Through brushing, the natural grain structure of the wooden plank is accentuated, adding depth.



NATURAL KNOTS

Knots are a natural part of the wood, emphasising its liveliness. By including knots with subtly recessed surfaces, the authentic look of your floor is emphasised, creating more depth and a vintage look.

DESIGN COLOURS

Through the use of different treatment techniques, like smoking and reactive staining, each plank features a unique and natural colour.



Finish

All Quick-Step parquet floors are pre-finished for your convenience. You won't need any lacquer or oil after the installation. Thanks to this protective layer, your parquet floors will look brand new, even after years of use.



LACQUERED FINISH

- Seven layers of protective lacquer.
- Highly scratch and wear resistant.
- Improved protective layer that keeps the surface and the joints of your floor clean, even after years of use, thanks to Wood for Life.



OILED FINISH

- Two layers of high-quality oil.
- Emphasises the authenticity of real wood.
- Can be renewed, restored and kept pristine for many years with Quick-Step cleaning products.

DISCOVER OUR CLEANING PRODUCTS ON P. 110

A HEART FOR YOUR HOME AND OUR PLANET

We all love natural beauty. The only way to continue to enjoy the beautiful things our planet has to offer is to treat it with respect. That's why our flooring products not only look good, but are as hard-wearing and sustainable as possible. Together, we can reduce our ecological footprint, from the production of your flooring to the end of its life.

Wood as a sustainable product

As a renewable resource, trees play a crucial role in combatting climate change. So we must treat them with care, in particular the slow-growing species such as oak. That's why we use these species only in the top layer of our parquet. We prefer to use wood from **fast-growing trees**. And for our **Disegno range**, we use smaller pieces of wood that would otherwise go to waste. This is how we get the most out of every tree, and you get high-quality flooring for your home.

Wood can be an infinite resource if we manage our forests in a sustainable way. A **PEFC label** means that the wood in your flooring comes from sustainably managed forests.

Green source of energy

If the wood has reached the end of its life and is no longer suitable for use in your flooring, we will give it a new lease of life in the form of **green energy**. Our primary heat source for the production of parquet flooring is wood residues and dust, which cover about 90% of our requirements.



Clean indoor air

Most of your life takes place indoors, which is why the air quality in your home is so vitally important. Many factors have an effect on it: ventilation, candles, cleaning agents, and even the materials used in your interior, such as the flooring. We work to minimize VOC (Volatile Organic Compound) emissions. Our wood flooring is compliant to the stringent F4-star regulation, due to its extremely low Formaldehyde emissions.

Also for other VOC's, our wood floors meet stringent requirements such as, the German AgBB, BREEAM, LEED,

Highest guarantee for the air quality in your home.

Easy to install and dismantle

As parquet flooring is a long-term investment, we provide you with a **lifetime guarantee**. What's more, our advanced click technology makes it really easy for you to install your flooring without any glue or tools. If you ever need to remove your flooring, you can do so without damaging it or making a mess, thanks to its glue-free installation. This means that your flooring can be processed efficiently when it reaches the end of its life.

Do you want to find out more about the sustainability of our flooring products?
Read all about it on [quickstep.com](https://www.quickstep.com)



CASTELLO ————— CAS5481TU



UP TO THE TASK



Installing Quick-Step parquet flooring yourself? Take your pick between two options: floating or glued down. Make sure to choose the latter option when combining parquet with underfloor heating – or use a Silent Walk underlay if you install floating. You can even use our parquet to easily finish or renovate any type of staircase.

Putting in a new floor has never been so simple. Our Quick-Step Uniclic system guarantees effortless flooring installation, even in small corners and underneath heating elements. With the right underlay, glue and installation tools, your parquet is placed in no time.

FIND THE RIGHT INSTALLATION TOOLS ON P. 104



IMP4826TU



IMPERIO

IMP4826TU

PRE-TREATED FLOORS: IMMEDIATELY ENJOYED, EASILY MAINTAINED

We know you want to enjoy your new floor as quickly as possible. That's why we pre-treat them with oil or lacquer. It's one less thing you need to worry about. Our protective layers will keep them looking like new for years, and our cleaning products really let them shine.

All parquet floors

Use our Quick-Step cleaning product for regular maintenance.

Oiled floors

The Quick-Step Oil care protects your oiled parquet floor and prevents it from drying out and losing its lustre. Apply with a damp mop every four cleaning sessions.

The Quick-Step Maintenance oil protects the matt finish of your oiled parquet floor and repairs minor damage. Apply it each year or more when necessary.

EXPLORE ALL CLEANING ACCESSORIES ON P. 110



IMP4826TU

CREATING YOUR PERFECT DINING ROOM

Creating your dream home starts with a comprehensive shopping list for every room. Take this dining room, for example: stylish and modern, with Quick-Step parquet emphasising its natural look. What does your ideal dining room look like?

From installation to finishing and maintenance, we'll provide you with all the tools and products you need for your project.

SHOPPING LIST

Everything you need to create the dining room of your dreams.

INSTALLATION

PARQUET GLUE

PARQUET TROWEL

INSTALLATION SET

FINISHING

PAINTABLE PARQUET SKIRTING

INCIZO PROFILE

ONE4ALL GLUE

MAINTENANCE

CLEANING PRODUCT 2.5 L

CLEANING KIT

OIL CARE

MAINTENANCE OIL





PALAZZO

PAL3884TU

Take it to the next level with parquet for stairs

Did you know that Quick-Step parquet is perfectly suited to staircases? It offers great protection from wear and tear. Thanks to the oil or lacquer pre-treatment, your parquet will always look brand new.

TIP: STYLE YOUR STAIRCASE ACCORDING TO YOUR TASTE WITH COLOUR-MATCHED INCIZO PROFILES. YOU CAN FIND THEM ALL IN OUR ACCESSORIES SECTION ON PAGE 108.

PERFECTLY
DESIGNED
WITH THE BEST
THAT NATURE
HAS TO OFFER



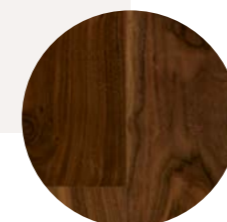
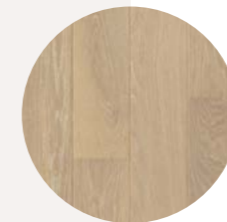
ON TOP OF THE *trends*

SOFT PLAY

NATURE LUXE

DARK LUXE

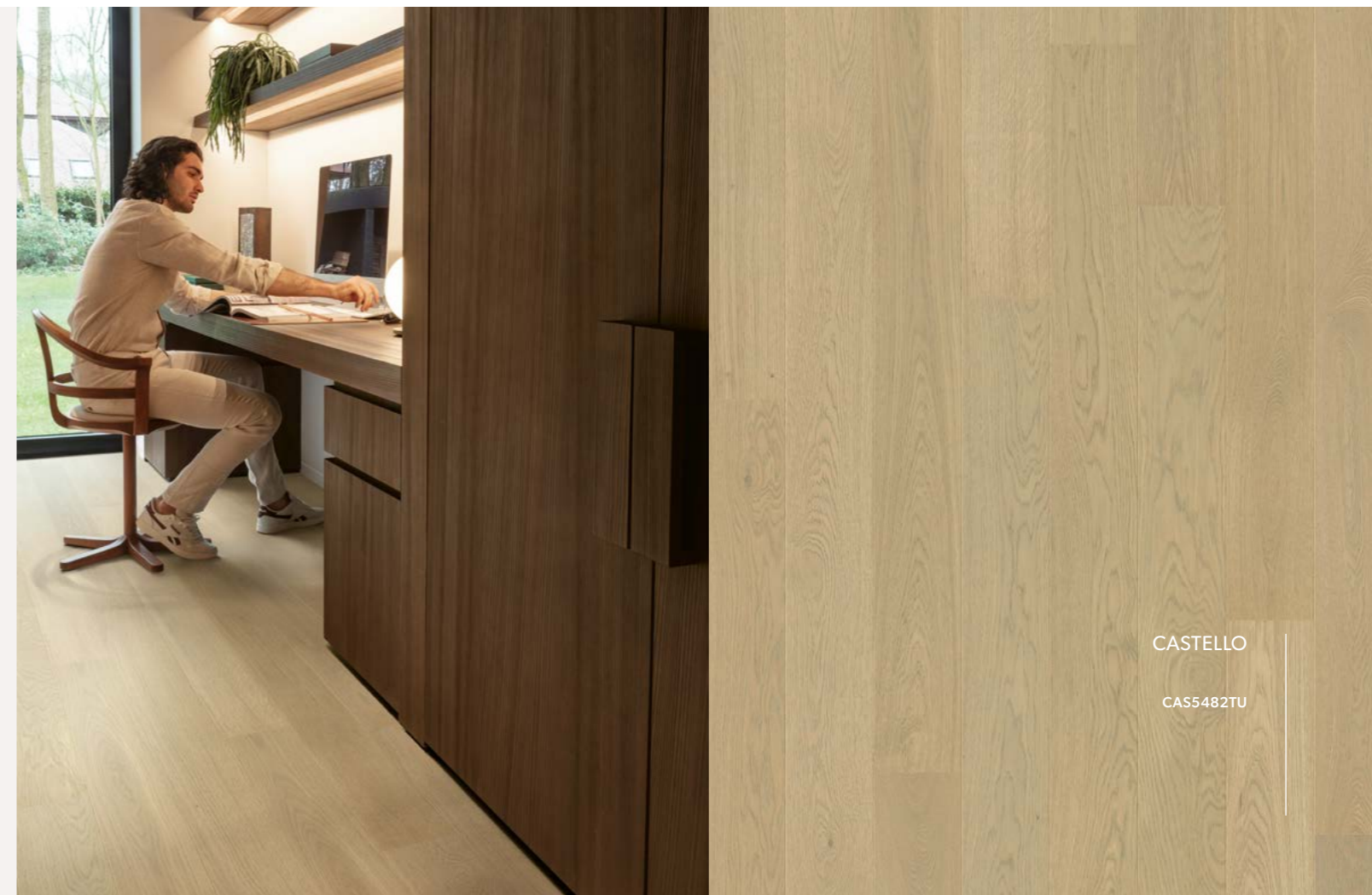
You're all about style. We get that. That's why we continuously adapt our collections over the years by closely tracking the latest trends in colours and patterns for our designs. Discover three of them.

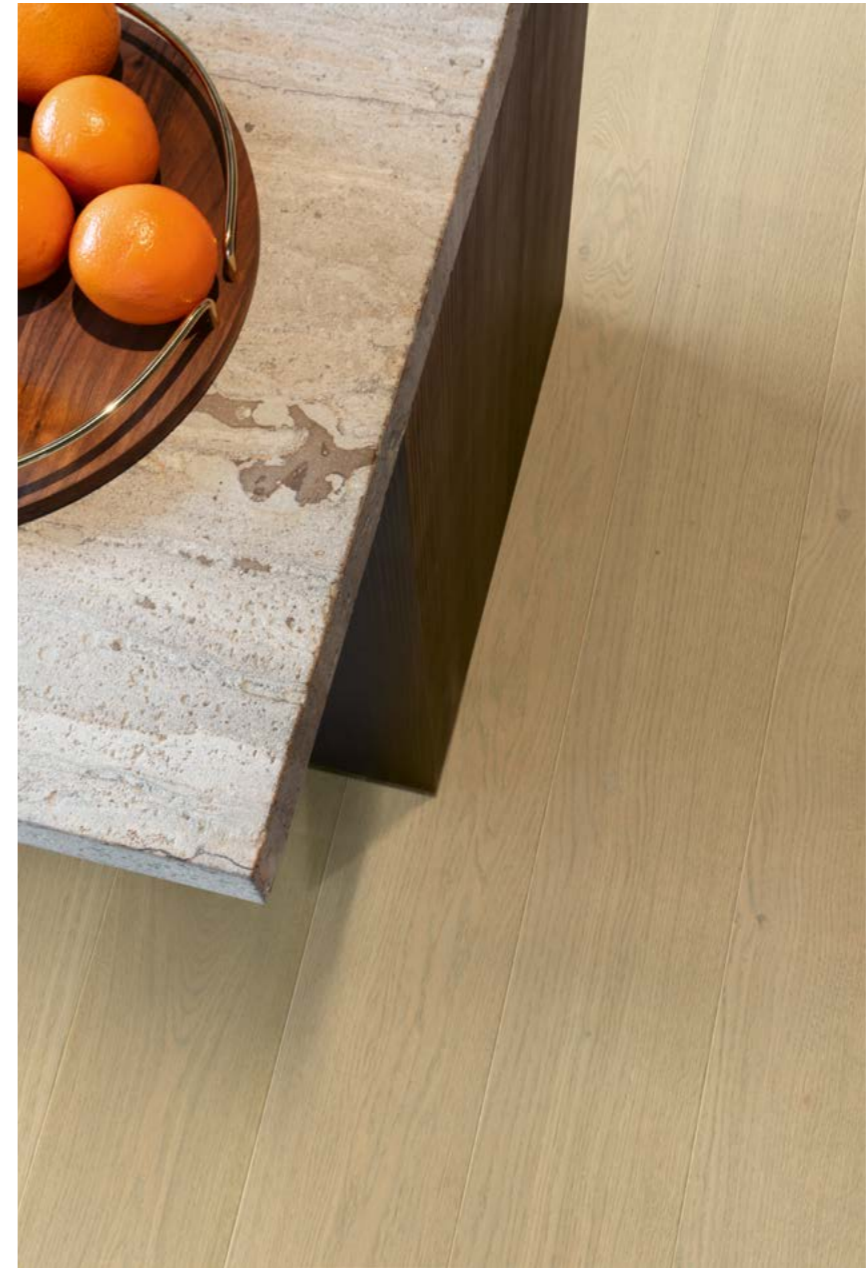




Soft play: natural wellbeing

At home, you can let your imagination run free. Feel like creating a peaceful and playful atmosphere throughout the house? Go for soft materials with natural colours to inspire rejuvenation. As colours influence your mood and wellbeing, it's important to choose wisely! For those who feel like adding a touch of playfulness: don't hesitate to experiment with patterns. A wood herringbone pattern adds a spark of joyful interest to your interior.





PALAZZO

PAL5482TU



MAS4824TU



PAL1472TU



IMPERIO

IMP1624TU

Nature luxe: precious materials

Your cocoon could use some of nature's calm and harmony. Real wood floors can bring the outside world into your home. Celebrate the uniqueness of nature, where lines are never straight, and every single element is one of a kind. Nature luxe features pure and original forms. Create a luxurious, warm home with oak in natural colours for all surfaces of the house. Monochromatic colour schemes with tone-on-tone of one chosen colour or material are trending, and it's not hard to see why. Green and brown are also a great combination. Combine them with metallics such as gold or copper to add a touch of splendour.





DISEGNO ————— DIS5403TU



PAL3889TU



PAL3889TU



CAS3444U

Dark luxe: you want it darker?

Dark hues never go out of style. If you want to give your rooms a moody and seductive, even luxurious vibe, dark colours are the way to go. On darker surfaces, gloss effects, structure and details become much more vibrant. Go for a combination of blue, green, brown and grey, add exclusive materials and create that high-end design look. You can also work with black and brown tones to create a dark colour scheme often contrasted with smooth reflective materials such as brass and chrome. This adds an exclusive touch. Too dark? Just add some white or lighter colours to style a room precisely to your liking.



CASTELLO

CAS1356U



TOOLS TO HELP YOU CHOOSE

FloorExplorer

With so many flooring options to choose from, making the right decision can be a challenge. Let our FloorExplorer guide you through a selection of floors that match your personal needs and style in just a few steps. Give it a try!

GET INSPIRED AND FIND A DEALER [quickstep.com](https://www.quickstep.com)

RoomViewer

Having doubts about which Quick-Step floor suits your interior best? No problem! Thanks to our online RoomViewer, you can preview any floor in your own interior to help you make the right choice.



DOES SIZE MATTER?

Undoubtedly YES!



MASSIMO

MAS3562TU

A simple rule to follow is to use large formats for large rooms to emphasise the spacious ambiance. For small or irregularly shaped rooms, small formats will match the proportions of the room better.



Find out what your favourite
parquet floors would look like
in your interior



SCAN THE QR CODE
TO ACCESS OUR ROOMVIEWER





PAL6692TU

THE ICING ON THE CAKE

Matching skirtings

Go for a great look with Quick-Step colour-matched skirtings for your floor.

PERFECTLY MATCHING COLOURS

Our skirtings flawlessly match the colour of every floor.

REAL VENEER SURFACE

An authentic wood experience in the entire room.

QUICK-STEP WARRANTY

Skirtings come with the same warranty as your floor.

CHECK OUT ALL SKIRTINGS AND PROFILES ON P. 106



Paintable skirtings

Grab a can and paint your skirtings in a colour that suits your style, or simply leave them white.





CASTELLO ————— CAS5483TU



IN WHICH DIRECTION SHOULD

Guided by the light

The direction of your floor has a huge impact on a room's overall appearance and can be a tough nut to crack. As a general rule, lay your floor in the same direction as the main light source in a room and in the same line as the most frequently used entrance. If there are several doors and windows, then opt for the direction that's the easiest to install.



In narrow rooms

Installing your floor in a narrow room? Why not lay it horizontally! Planks laid width wise will make the surface appear wider, avoiding a boxed-in effect. To enhance this even further, avoid dark colours for your floor or walls, as these will make a narrow room look even narrower.



I INSTALL MY FLOOR?

In short rooms

If you're laying your floor in a short room, you'll want to add a sense of depth. Make the room look longer by installing your floor lengthwise. Want to increase the effect of lengthwise installation? Make sure to combine a light-coloured floor with darker walls: this will add even more depth to your room.



WORRY-FREE DIY INSTALLATION

Did you find your dream floor? The Quick-Step Uniclic system ensures a quick and easy installation, even in tight corners and under radiators. On top of that, all Quick-Step parquet floors can be installed over traditional underfloor heating, and even on stairs!

You can find all the accessories required to install and finish your floor at Quick-Step.

Check out our installation tips and videos at [quickstep.com](https://www.quickstep.com)



IMPERIO

IMP4826TU

GET CREATIVE WITH PATTERNS

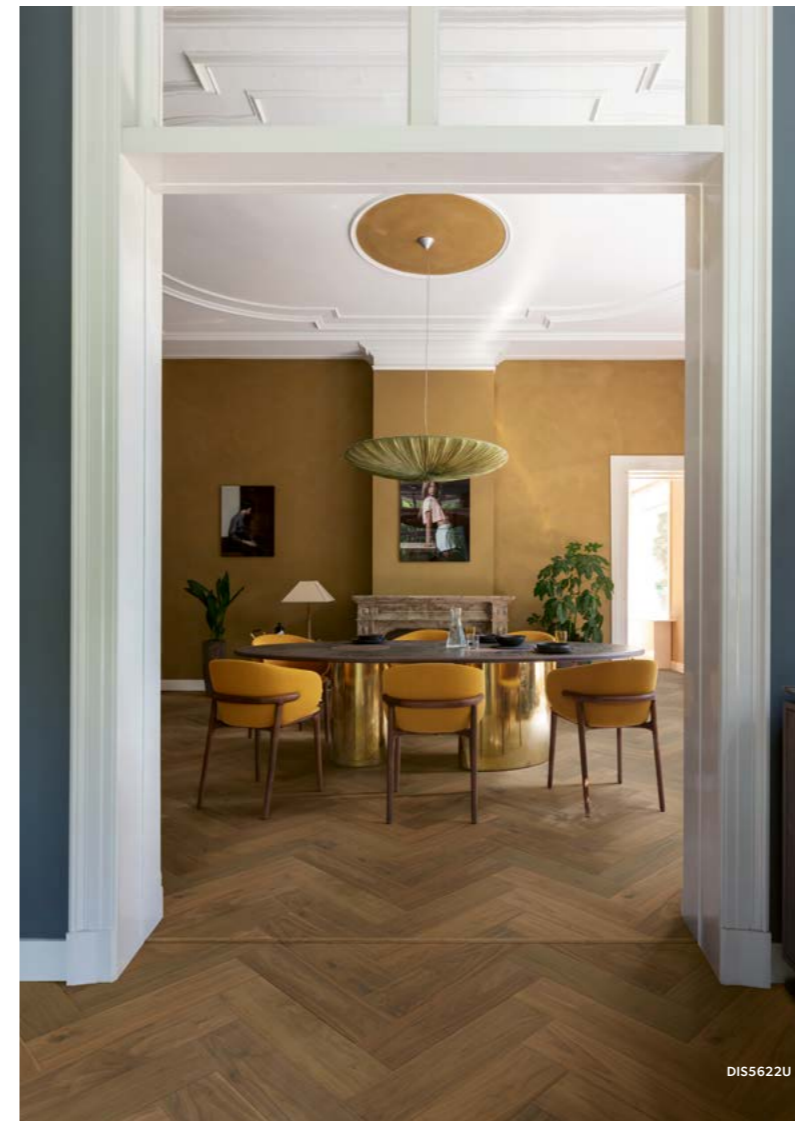
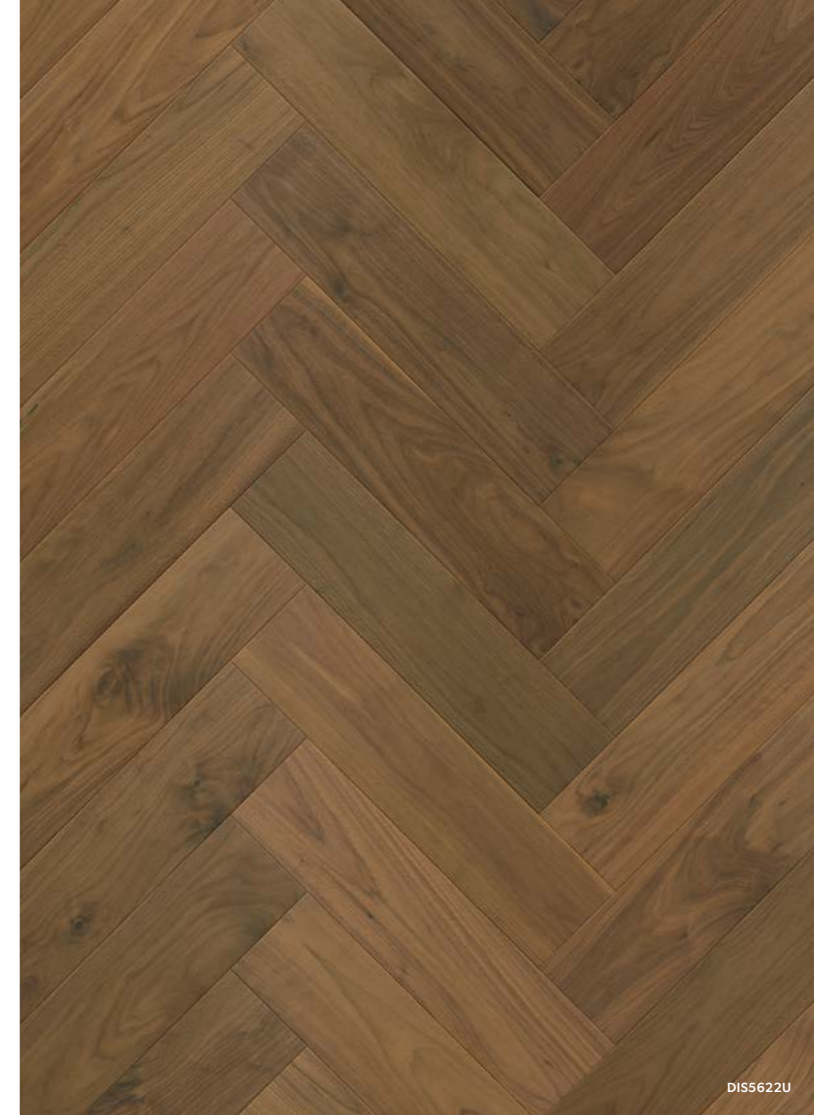
Herringbone patterns are timeless classics that are effortlessly finding their way into modern interiors. They add a touch of playfulness and turn every room into an eyecatcher.

DISEGNO

580 x 145 x 13.5 mm



With this wooden floor, the herringbone pattern is easily achieved. Unleash your creativity with three possible pattern options.



Herringbone



Double herringbone



Tile

WE'VE GOT THE ANSWERS TO ALL YOUR QUESTIONS

SHOULD I GO FOR LACQUER OR OIL?

LACQUER

A lacquer film applied to the surface of the parquet closes the pores of the wood. If you opt for extra matt lacquer, your parquet will have the soft look of oiled wood. Lacquered Quick-Step parquet receives up to seven layers of UV-cured, water-based lacquer. That's how we make maintenance easier for you and protect your floor against wear, scratches and stains.

OIL

Oiling your parquet means impregnating the wood: the oil seeps into the pores, protecting the wood from the inside and giving it a natural vibe. Oiled Quick-Step parquet has an extra matt and authentic look and ages beautifully, thanks to its two layers of modified oil. With oiled parquet, micro scratches can be removed easily with a maintenance oil. Oiled parquet is also easy to maintain. But watch out: dirt and stains penetrate oiled wood, and it scratches more easily than lacquered wood. That's why you should always give your parquet the maintenance it deserves.

WHAT'S THE DIFFERENCE BETWEEN FLOATING AND GLUED DOWN INSTALLATION?

Quick-Step parquet floors can be installed in two ways: glued down or floating. For glued-down installation, we advise the Quick-Step Parquet Glue, which was specifically developed for use with Quick-Step parquet floors. A floating installation requires no glue, but the use of a Quick-Step underlay. In combination with underfloor heating, a glued-down installation performs best, whereas a floating installation is easier to accomplish. The choice is yours!

DO I REALLY NEED EXPANSION JOINTS?

It's important to have the prescribed expansion joints along all walls and fixed obstacles to ensure that your floor has enough room to expand or contract due to changes in humidity.

If the room is more or less square and if there aren't strong indoor climate changes, you can lay a surface of up to 20 m long and 20 m wide without extra expansion joints in the floor surface. With lengths of more than 20 m and widths of more than 20 m, there should be an intermediate expansion joint. For detailed information, check the installation instructions.

If you go for a floating installation, it is also necessary to place expansion joints under the doors between rooms to separate the rooms. With a glued down installation, that's not necessary.

MORE QUESTIONS?

[quickstep.com](https://www.quickstep.com)



IMP1623TU



Installing the right underlay has a major impact on the final look, quality and acoustics of your floor.

When you opt for a floating installation, choosing the right underlay is essential. Besides creating a level base for the installation of your new floor, it also provides excellent acoustic insulation and reduces creaking noises.

FIND THE IDEAL UNDERLAY FOR YOUR FLOOR ON P. 104

If you're also installing underfloor heating, gluing your floor down will give you the best results. If you go for a floating installation, you have to combine your underfloor heating with a Quick-Step Silent Walk underlay.



PALAZZO

PAL6693TU

BEAUTY COMES IN MANY SIZES

COLLECTIONS			DIMENSIONS	BOX	BEVELS	BUILD-UP	INSTALLATION	WARRANTY
	MASSIMO		2200 x 260 x 13.5 mm	4 planks = 2.288 m ²				✓ LIFETIME WARRANTY DOMESTIC USE ✓ 15 YEAR WOOD FOR LIFE WARRANTY
	IMPERIO		2200 x 220 x 13.5 mm	4 planks = 1.936 m ²				✓ LIFETIME WARRANTY DOMESTIC USE ✓ 15 YEAR WOOD FOR LIFE WARRANTY
	PALAZZO		1820 x 190 x 13.5 mm	6 planks = 2.075 m ²				✓ LIFETIME WARRANTY DOMESTIC USE ✓ 15 YEAR WOOD FOR LIFE WARRANTY
	CASTELLO		1820 x 145 x 13.5 mm	6 planks = 1.583 m ²				✓ LIFETIME WARRANTY DOMESTIC USE ✓ 15 YEAR WOOD FOR LIFE WARRANTY
	DISEGNO		580 x 145 x 13.5 mm	12 planks = 1.009 m ²				✓ LIFETIME WARRANTY DOMESTIC USE ✓ 15 YEAR WOOD FOR LIFE WARRANTY



Wooden build-up with 2.5 mm top layer

MASSIMO

The longest and widest planks in the entire Quick-Step Wood collection, Massimo is sure to impress with its extra-large dimensions and superior authenticity and craftsmanship.

MORE INFO FROM CLASSIFICATION TO WOOD TREATMENT AND FINISHING ON PAGE 32



MAS4825TU



MASSIMO

2200 x 260 x 13.5 mm - Box: 4 planks = 2.288m²



2.5 mm



Frozen oak extra matt
MAS3562TU
Vibrant



YOU'VE SEEN THIS FLOOR ON PAGE 68-71



Heavy Snow Oak Extra Matt
MAS4825TU
Vibrant



YOU'VE SEEN THIS FLOOR ON PAGE 92



Cappuccino blonde oak extra matt
MAS3566TU
Vibrant



YOU'VE SEEN THIS FLOOR ON PAGE 22-23 & 64-65



Bittersweet oak extra matt
MAS4824TU
Vibrant



- ✓ LIFETIME WARRANTY
- ✓ 15 YEAR WOOD FOR LIFE WARRANTY

IMPERIO

Create a room fit for royalty with the long and wide planks of the Imperio collection. Enjoy a sense of depth and exclusivity and embrace the authenticity and craftsmanship of real wood.

MORE INFO FROM CLASSIFICATION TO WOOD TREATMENT AND FINISHING ON PAGE 32



IMPERIO

2200 x 220 x 13.5 mm - Box: 4 planks = 1,936 m²



2.5 mm



Pure Oak Extra Matt
IMP1623TU
Marquant



YOU'VE SEEN THIS FLOOR ON PAGE 84



Toffee oak extra matt
IMP4827TU
Marquant



Natural Heritage Oak Extra Matt
IMP1624TU
Marquant



YOU'VE SEEN THIS FLOOR ON PAGE 31, 58-59, 74-75 & 94



Sweet Oak Extra Matt
IMP4826TU
Marquant



YOU'VE SEEN THIS FLOOR ON PAGE 41-42, 45, 78 & 80



- ✓ LIFETIME WARRANTY
- ✓ 15 YEAR WOOD FOR LIFE WARRANTY

PALAZZO

Palazzo reinvents the glory days of wood. Beautifully proportioned and with subtle V grooves on the long side of each plank, these long and wide floorboards will add warmth and character to any space. With its wooden core, this collection embraces more traditional wood floor engineering.

MORE INFO FROM CLASSIFICATION TO WOOD TREATMENT AND FINISHING ON PAGE 32



PAL4830TU



PALAZZO

1820 x 190 x 13.5 mm - Box: 6 planks = 2.075 m²



2.5 mm



Manhattan grey oak matt
PAL6693TU

Marquant



YOU'VE SEEN THIS FLOOR ON PAGE 88



Antique Oak Extra Matt
PAL6691TU

Marquant



Honey oak oiled
PAL1472TU

Nature



YOU'VE SEEN THIS FLOOR ON PAGE 18



Snow white oak extra matt
PAL3884TU

Nature



YOU'VE SEEN THIS FLOOR ON PAGE 48



Icy white oak matt
PAL4830TU

Nature



YOU'VE SEEN THIS FLOOR ON PAGE 2, 28 & 96



- ✓ LIFETIME WARRANTY
- ✓ 15 YEAR WOOD FOR LIFE WARRANTY



CASTELLO

Castello's subtle V groove adds depth to your room. Create an inviting atmosphere for any interior style thanks to our broad range of wood species, structures and finishes.

MORE INFO FROM CLASSIFICATION TO WOOD TREATMENT AND FINISHING ON PAGE 32



CAS1340TU

- ✓ LIFETIME WARRANTY
- ✓ 15 YEAR WOOD FOR LIFE WARRANTY

PALAZZO

1820 x 190 x 13.5 mm - Box: 6 planks = 2.075 m²



2.5 mm



Lemon Oak Extra Matt
PAL6692TU
Marquant



YOU'VE SEEN THIS FLOOR ON PAGE 6-7, 72-73, & 111



Oat Flake White Oak Extra Matt
PAL5481TU
Nature



YOU'VE SEEN THIS FLOOR ON PAGE 21 & 78



Concrete oak oiled
PAL3795TU



YOU'VE SEEN THIS FLOOR ON PAGE 6-7, 72-73, & 111



Midnight oak oiled
PAL3889TU

Vibrant



YOU'VE SEEN THIS FLOOR ON PAGE 62



Luna grey oak extra matt
PAL5482TU
Nature



YOU'VE SEEN THIS FLOOR ON PAGE 56-57



1820 x 145 x 13.5 mm - Box: 6 planks = 1.583 m²



2.5 mm



Noble walnut satin
CAS1356U

Nature



YOU'VE SEEN THIS FLOOR ON PAGE 63



Polar oak matt
CAS1340TU

Nature



YOU'VE SEEN THIS FLOOR ON PAGE 99



Sweet walnut satin
CAS3444U

Marquant



Pure oak matt
CAS1341TU

Nature



YOU'VE SEEN THIS FLOOR ON PAGE 25



Bucket brown oak extra matt
CAS6694TU

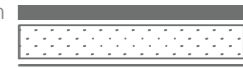
Marquant



1820 x 145 x 13.5 mm - Box: 6 planks = 1.583 m²



2.5 mm



Silk oak extra matt
CAS3894TU

Nature



YOU'VE SEEN THIS FLOOR ON PAGE 54



Oat Flake White Oak Extra Matt
CAS5481TU

Nature



YOU'VE SEEN THIS FLOOR ON PAGE 38-39



Cappuccino oak oiled
CAS1478TU

Marquant



Iris grey oak extra matt
CAS5483TU

Marquant



YOU'VE SEEN THIS FLOOR ON PAGE 76-77 & 79



Luna grey oak extra matt
CAS5482TU

Nature



YOU'VE SEEN THIS FLOOR ON PAGE 55



DISEGNO

Installing a herringbone pattern has never been easier than it is with the trendy Disegno collection. Or, why not switch it up and create a square basket pattern?

MORE INFO FROM CLASSIFICATION TO WOOD TREATMENT AND FINISHING ON PAGE 32
CHOOSE BETWEEN TWO PATTERNS FEATURED ON PAGE 83



DIS5673TU



DISEGNO

580 x 145 x 13.5 mm - Box: 12 planks = 1.009 m²



2.5 mm



Luna grey oak extra matt
DIS5403TU

Nature



YOU'VE SEEN THIS FLOOR ON PAGE 60-61



Lush brown oak extra matt
DIS5402TU

Nature



YOU'VE SEEN THIS FLOOR ON PAGE 46-47 & 82



Manhattan grey oak matt
DIS5673TU

Nature



YOU'VE SEEN THIS FLOOR ON PAGE 102



Iris grey oak extra matt
DIS5401TU

Nature



Light walnut oak matt
DIS6697TU

Nature



Urban walnut extra matt
DIS5622U

Nature



YOU'VE SEEN THIS FLOOR ON PAGE 83



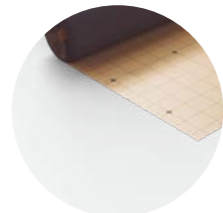
✓ LIFETIME WARRANTY
✓ 15 YEAR WOOD FOR LIFE WARRANTY

ACCESSORIES

INSTALLATION

UNDERLAYS

If you're going for a quick and smooth floating installation, choosing the right underlay is essential. Besides creating a **level base**, it also provides **excellent acoustic insulation** and **reduces creaking noises**.



Silent Walk
QSUDLSW7
Thickness: 2 mm - Roll: 7 m²

The best underlay for rooms with heavy traffic, such as your living room and hallway. Offers optimal noise reduction and is compatible with underfloor heating.



Unisound
QSUDLDRUCO15
Thickness: 2 mm - Roll: 15 m²

Great all-round underlay for rooms with frequent traffic, such as your living room, hallway and kitchen. Not compatible with underfloor heating and cooling.



Basic Plus
QSUDLBP15/60
Thickness: 2 mm - Roll: 15/60 m²

All-round underlay for rooms with less traffic, such as your bedroom and home office. Compatible with underfloor heating.



Transitsound
QSUDLTRS15
Thickness: 2 mm - Roll: 15 m²

The ideal noise-reducing underlay for upper-floor rooms and apartments. Not compatible with underfloor heating and cooling.



Thermolevel
QSUDLT9
Thickness: 5 mm - Box: 9 m²

The best choice for irregular subfloors. Provides additional insulation. Not compatible with underfloor heating and cooling.

GLUED-DOWN INSTALLATION

If you're going for a glued-down installation, use Quick-Step Parquet glue for the best result. Our **ready to use** glue has a **long open time** and guarantees **fast adhesion**. A glued-down installation of your wood floor **reduces footstep noise** to a minimum, allows your floor to **breathe and expand** with temperature variations and maximises the performance of **floor heating systems**.



Parquet glue
QSWGLUE16A
16 kg

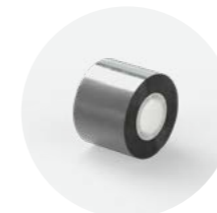
Resealable aluminium bags packed in cardboard boxes. Average usage: 16 kg for 13-16 m². Read the instructions before you get started. Check if the glue is compatible with your subfloor.



Parquet trowel
QSWB11

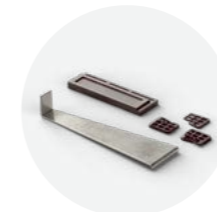
This high-quality trowel provides a perfect glue distribution and is indispensable for a professional glued-down installation.

INSTALLATION TOOLS



Adhesive tape
NETAPE50
Roll: 50 m

Attach your underlay for a moisture-proof underlay installation.



Installation set
QSTOOLA

Set with a tapping block to easily click planks together, a cramp iron for hard-to-reach places and spacers to provide perfect expansion joints (8 to 12 mm) between walls and floor.

FINISHING

COLOUR-MATCHED SKIRTINGS

Why choose Quick-Step colour-matched skirtings and profiles?

PERFECTLY MATCHING COLOURS

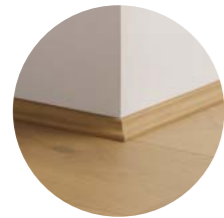
Our skirtings and profiles flawlessly match the colour of every floor.

REAL VENEER SURFACE

An authentic wood experience across the entire room.

QUICK-STEP WARRANTY

Skirtings come with the same warranty as your floor.



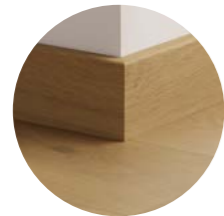
Scotia
QSWSCOT(-)
2400 x 17 x 17 mm

A discrete finish that matches the colour of your floor. Easy to install with One4All Glue. Also available in a white, paintable version (QSSCOTPAINT).



Water resistant scotia
QSWSCOT(-)MM
2400 x 17 x 17 mm

Colourmatched water resistant scotia. Easy to install with One4All Glue.



Parquet skirting
QSWPPSKR(-)
2400 x 16 x 80 mm

Skirting with space to hide cables. Easy to install with One4All Glue or Track. Also available in a white, paintable version (QSWPPSKRPAINT).



Water resistant parquet skirting
QSWPPSKR(-)MM
2400 x 16 x 80 mm

Colourmatched water resistant parquet skirting. Easy to install with One4All Glue or Track to hide cables.

PAINTABLE SKIRTINGS



Paintable scotia
QSSCOTPAINT
2400 x 17 x 17 mm

Paintable scotia that can be left white as well. Easy to install with One4All Glue. Not suitable for damp rooms - check out our range of waterproof skirtings.



Paintable parquet skirting
QSWPPSKRPAINT
2400 x 16 x 80 mm

Paintable skirting with space to hide cables. Easy to install with One4All Glue or Track. Not suitable for damp rooms - check out our range of waterproof skirtings.



Paintable cover skirting
QSISKRCOVER
2400 x 16 x 129 mm

Paintable skirting to put over an existing one - ideal for renovations. Adjustable to 4 heights between 68 and 129 mm. Can be left white as well. Easy to install with One4All Glue. Not suitable for damp rooms - check out our range of waterproof skirtings.



Paintable ovolo skirting
QSISKRWHITE
2400 x 16 x 160 mm

Paintable skirting that can be used in two shapes for more decorative freedom. Adjustable to 5 heights between 25 and 134 mm - use the supplied Incizo knife. Can be left white as well. Easy to install with One4All Glue. Not suitable for damp rooms - check out our range of waterproof skirtings.



SHAPE 1



SHAPE 2



Paintable ogee skirting
QSISKROGEE
2400 x 16 x 160 mm

Paintable skirting that can be used in two shapes to add a specific character to your interior. Adjustable to 4 heights between 20 and 140 mm - use the supplied Incizo knife. Can be left white as well. Easy to install with One4All Glue. Not suitable for damp rooms - check out our range of waterproof skirtings.



SHAPE 1



SHAPE 2



Paintable small skirting
QSPSKR4PAINT
2400 x 14 x 40 mm

Paintable skirting that can be left white as well. Also available in a flexible version (QSFLEXSKR) to finish your entire space in the same style. Easy to install with One4All Glue. Not suitable for damp rooms - check out our range of waterproof skirtings.

WATERPROOF PAINTABLE SKIRTINGS



Paintable waterproof scotia
QSHSCOTPAINT
2400 x 20 x 30 mm

Paintable, 100%-recyclable polystyrene scotia that can be left white as well. Use the Foamstrip and Hydrokit for a watertight finish in damp rooms. Easy to install with One4All Glue.



Paintable waterproof skirting - large
QSHSK80PAINT
2400 x 15 x 80 mm

Large, paintable, 100%-recyclable polystyrene skirting that can be left white as well. Use the Foamstrip and Hydrokit for a watertight finish in damp rooms. Easy to install with One4All Glue.



Paintable waterproof flexible skirting
QSFLEXSKR
14 x 40 mm

Flexible, paintable skirting made of foamed PVC that can be cut to your desired length. Ideal to finish pillars or curved walls. Use the Foamstrip and Hydrokit for a watertight finish in damp rooms. Easy to install with contact glue.

INSTALLATION TOOLS FOR SKIRTINGS



One4All Glue
QSGlue290
290 ml

Multi-purpose glue that ensures adhesion to all materials and substrates. Average usage: 1 tube for 15 m of skirtings.



Track
NETRACK
2400 x 8 x 27 mm

Designed for installation of parquet skirtings. Secure the track to the wall with screws or the One4All Glue before clicking the skirtings into place.

COLOUR-MATCHED PROFILES



Incizo profile
QSWINCP(-)
2150 x 54 x 17 mm

Multifunctional and patented finishing tool to finish your floor and stairs in matching colours. Simply cut the Incizo basic profile to the desired shape with the supplied Incizo knife. Contains 1 Incizo profile, 1 Incizo knife and 1 plastic rail.

APPLICATION 1

Connect two floors of different heights.



APPLICATION 2

Connect two floors of the same height.



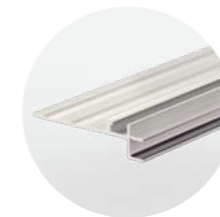
APPLICATION 3

Finish your floor along walls or windows.



APPLICATION 4

Create a nice transition between your parquet floor and other flooring types.



Incizo profile / Incizo aluminium subprofile for stairs
QSWINCP(-) / NEWINCPBASE(-)
2150 x 54 x 17 mm

The Incizo profile also allows you to finish your stairs and steps in the flooring design of your choice. For this application, you need the Incizo profile and an aluminium subprofile. Subprofile to be ordered separately.

APPLICATION 5

Finish your stairs and steps.



FINISHING TOOLS



Pipe covers
QSRCINOX15 / QSRCINOX22
2 pcs/pack

Stainless steel covers to nicely finish pipes and heating elements. Available in inside diameter sizes 15 and 22 mm. Do not glue the covers to the floor, but install them floating.

MAINTENANCE



Cleaning product 2.5 L
QSCLEANING2500
 2.5 L

Cleaning product specifically developed for Quick-Step floors. Cleanses the surface thoroughly and safeguards its original appearance to maximise that 'new floor' experience. Average usage: 2.5 L for 37 cleaning sessions.



Cleaning product 1 L
QSCLEANING1000
 1 L

Cleaning product specifically developed for Quick-Step floors. Cleanses the surface thoroughly and safeguards its original appearance to maximise that 'new floor' experience. Average usage: 1 L for 15 cleaning sessions.



Cleaning kit
QSSPRAYKIT

Mop holder with refillable water tank and handy lever to easily moisten and mop your floor. Also includes a washable microfiber mop and 1 L of Quick-Step Cleaning product. A sustainable choice to clean your floor.



Cleaning mop
QSSPRAYMOP

Microfibre mop washable up to 60 °C. Compatible with the Quick-Step Cleaning kit.



Repair kit
QSREPAIR

Kit to easily repair light damage and recreate the original colour of your floor. Find detailed instructions at quickstep.com.



Oil care
QSWOILCARE1000
 1 L

Protects your oiled parquet floor by preventing it from drying out and losing its gloss. Apply with a damp cloth every 4 cleaning sessions.



Maintenance oil
QSWMAINTOILN / QSWMAINTOILW
 1 L

Transparent/white oil that protects the matt finish of your oiled parquet floor and repairs minor damage. Use once a year (or more depending on the wear of your floor). Average usage: 1 L for 75 m². Consult your dealer to pick the right maintenance oil for your floor.



PAL6692TU

F ★ ★ ★ ★
COMPLIANT



* Information sur le niveau d'émission de substances volatiles dans l'air intérieur, présentant un risque de toxicité par inhalation, sur une échelle de classe allant de A+ (très faibles émissions) à C (fortes émissions).

YOUR QUICK-STEP DEALER



Quick-Step is a quality product produced by Unilin BV, division Flooring, Ooigemstraat 3, B-8710 Wielsbeke, Belgium, Europe.

Product images may differ from actual product. The availability of products, or the products themselves, may change at any time without notice. Content © 2023 - 2024 by Unilin BV, division Flooring. All rights reserved. The contents of this brochure may not be reproduced in whole or in part without prior written permission from the publisher.

022 1023 01

Coverphoto: MAS3562TU

quickstep.com

FOLLOW US ON



@quickstepfloors



@quickstepfloor